

# OFFICE SPACE FOR LEASE

**KOWIT & COMPANY**  
REAL ESTATE GROUP  
www.KowitRealEstate.com



**Cleveland Jet Center**  
**26380 Curtiss Wright Pkwy**  
**Richmond Heights, Ohio**

## Property Highlights

- Conveniently positioned next to the Cuyahoga County Airport
- Easy access to I-90 and I-271
- Fitness Center on Site
- Finely appointed corridors and bathrooms
- 15,502 SF of office space available
- Available space divisible down to 1,500 SF
- Join existing tenants: The Cleveland Jet Center, Axiom Aviation, The Intersoft Group, Great Lakes Billing Associates and more

## Demographics:

Estimated Population	Daytime Employees	Average HH Income
3 Miles: 61,827	3 Miles: 42,058	3 Miles: \$72,947
5 Miles: 216,093	5 Miles: 111,095	5 Miles: \$68,021
7 Miles: 333,123	7 Miles: 150,844	7 Miles: \$75,837



## Contact Agent:

**Chuck Essreg**

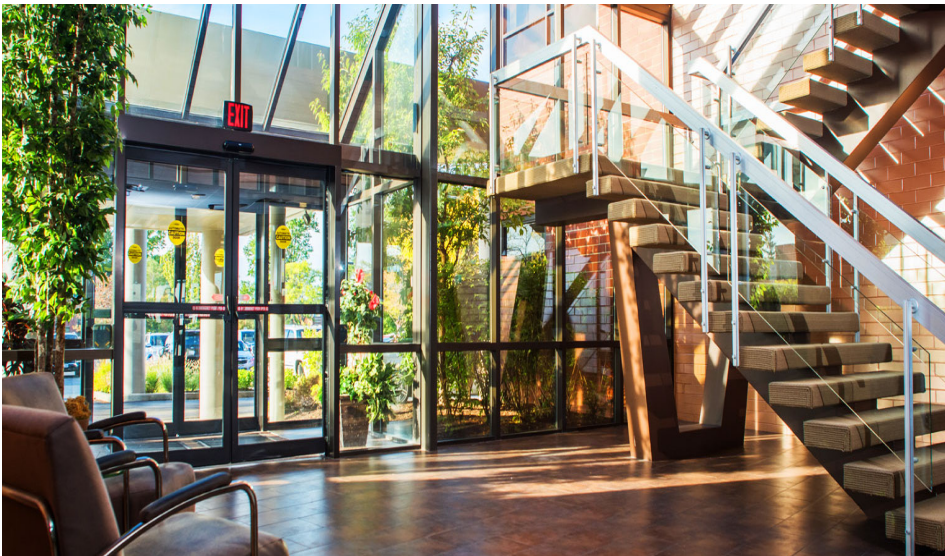
216.514.1400 x105

cessreg@kowitzrealstate.com



# OFFICE SPACE FOR LEASE PHOTOS

26380 Curtiss Wright Pkwy  
Richmond Heights, Ohio



**KOWIT & COMPANY**  
REAL ESTATE GROUP

6009-B Landerhaven Drive, Suite B  
Mayfield Heights, Ohio 44124  
P: 216.514.1400 | [www.kowitrealestate.com](http://www.kowitrealestate.com)

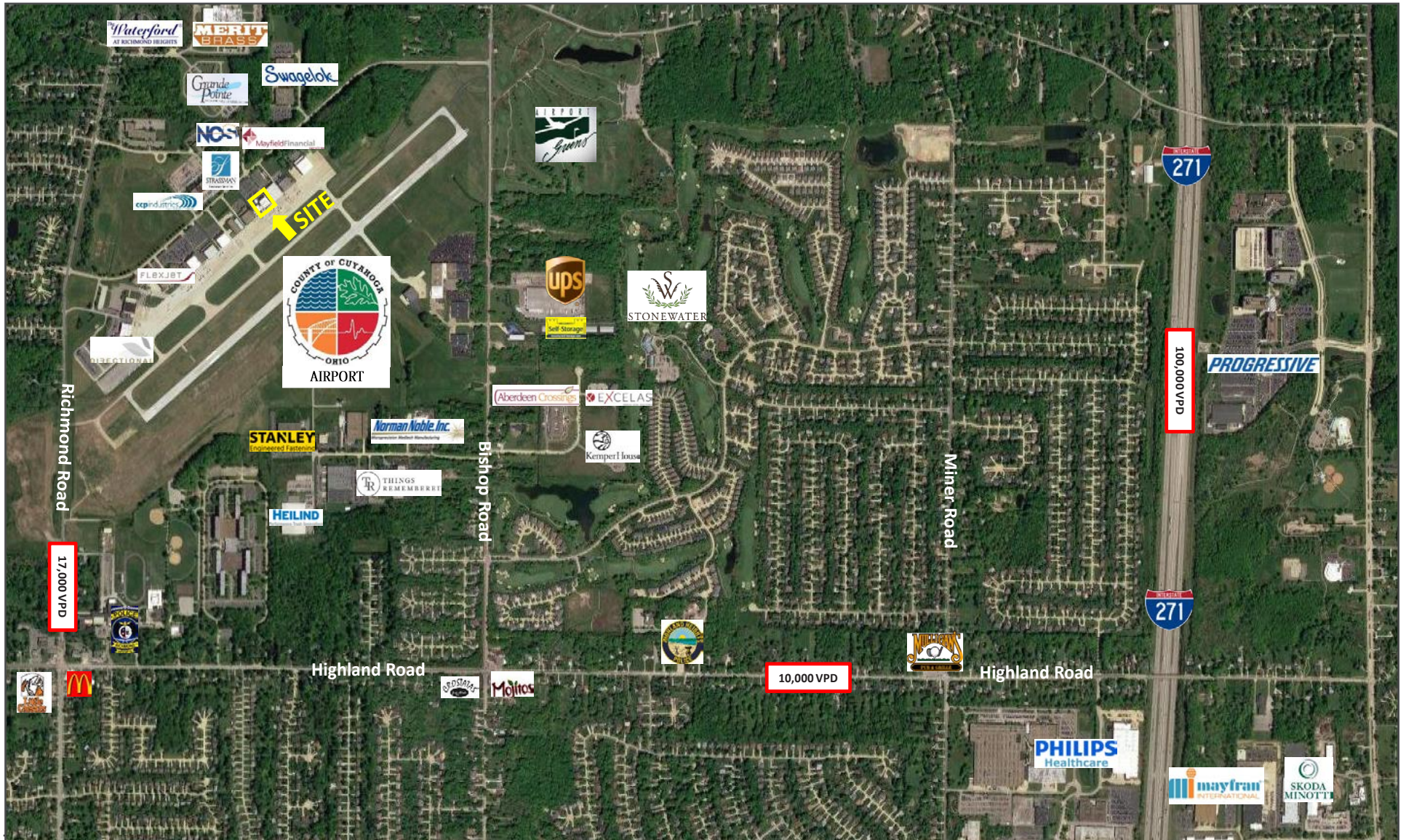
**Contact Agents:**

**Chuck Esreg**  
216.514.1400 x105  
[cessreg@kowitrealestate.com](mailto:cessreg@kowitrealestate.com)



# OFFICE SPACE FOR LEASE AERIAL

26380 Curtiss Wright Pkwy  
Richmond Heights, Ohio



**KOWIT & COMPANY**  
REAL ESTATE GROUP

6009-B Landerhaven Drive, Suite B  
Mayfield Heights, Ohio 44124  
P: 216.514.1400 | [www.kowitrealestate.com](http://www.kowitrealestate.com)

**Contact Agents:**

**Chuck Esreg**  
216.514.1400 x105  
[cessreg@kowitrealestate.com](mailto:cessreg@kowitrealestate.com)



# OFFICE SPACE FOR LEASE DEMOGRAPHICS

26380 Curtiss Wright Pkwy  
Richmond Heights, Ohio

26380 Curtiss Wright Pkwy Richmond Heights, OH 44143		3 mi radius	5 mi radius	7 mi radius
POPULATION	2018 Estimated Population	61,827	216,093	333,123
	2023 Projected Population	59,540	209,430	330,102
	2010 Census Population	62,733	221,271	341,617
	2000 Census Population	66,334	238,363	381,740
	Projected Annual Growth 2018 to 2023	-0.7%	-0.6%	-0.2%
	Historical Annual Growth 2000 to 2018	-0.4%	-0.5%	-0.7%
	2018 Median Age	43	42.2	41.3
HOUSEHOLDS	2018 Estimated Households	28,023	101,751	152,208
	2023 Projected Households	27,602	100,914	154,171
	2010 Census Households	27,370	100,331	150,310
	2000 Census Households	27,997	105,161	161,782
	Projected Annual Growth 2018 to 2023	-0.3%	-0.2%	0.3%
	Historical Annual Growth 2000 to 2018	-	-0.2%	-0.3%
RACE AND ETHNICITY	2018 Estimated White	57.4%	56.5%	55.7%
	2018 Estimated Black or African American	36.6%	37.7%	38.6%
	2018 Estimated Asian or Pacific Islander	3.4%	3.1%	3.1%
	2018 Estimated American Indian or Native Alaskan	0.1%	0.1%	0.1%
	2018 Estimated Other Races	2.4%	2.5%	2.5%
	2018 Estimated Hispanic	1.8%	2.0%	2.0%
INCOME	2018 Estimated Average Household Income	\$72,947	\$68,021	\$75,837
	2018 Estimated Median Household Income	\$58,576	\$52,120	\$57,536
	2018 Estimated Per Capita Income	\$33,177	\$32,146	\$34,781
EDUCATION (AGE 25+)	2018 Estimated Elementary (Grade Level 0 to 8)	2.3%	2.2%	2.1%
	2018 Estimated Some High School (Grade Level 9 to 11)	5.6%	6.1%	6.3%
	2018 Estimated High School Graduate	27.3%	27.9%	26.6%
	2018 Estimated Some College	23.7%	23.5%	22.6%
	2018 Estimated Associates Degree Only	7.1%	8.1%	7.8%
	2018 Estimated Bachelors Degree Only	20.5%	19.0%	19.1%
	2018 Estimated Graduate Degree	13.6%	13.2%	15.4%
BUSINESS	2018 Estimated Total Businesses	2,735	8,111	12,108
	2018 Estimated Total Employees	42,058	111,095	150,844
	2018 Estimated Employee Population per Business	15.4	13.7	12.5
	2018 Estimated Residential Population per Business	22.6	26.6	27.5



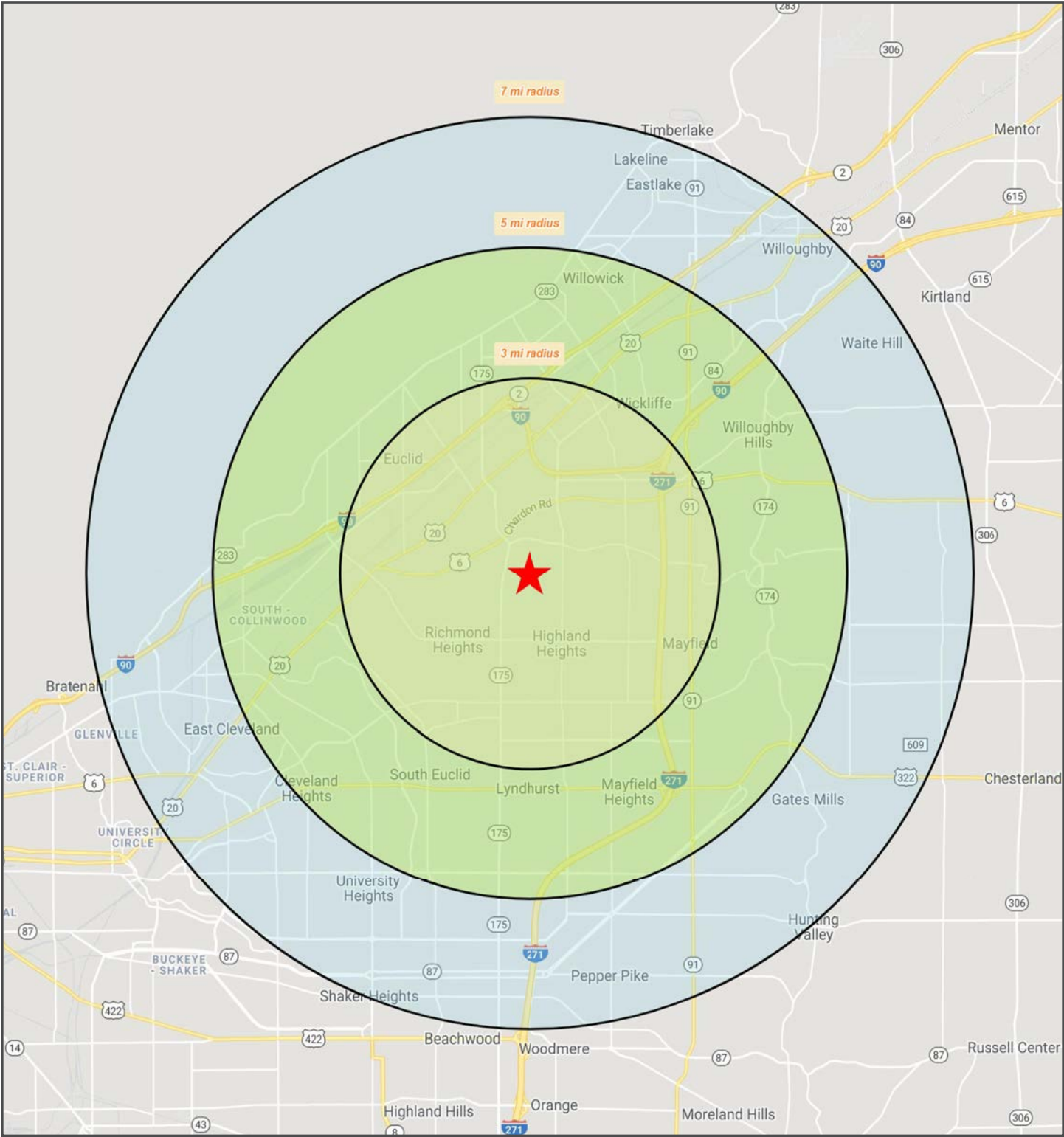
6009-B Landerhaven Drive, Suite B  
Mayfield Heights, Ohio 44124  
P: 216.514.1400 | www.kowitrealestate.com

**Contact Agents:**

**Chuck Esreg**  
216.514.1400 x105  
cessreg@kowitrealestate.com

# OFFICE SPACE FOR LEASE AREA MAP

26380 Curtiss Wright Pkwy  
Richmond Heights, Ohio



**KOWIT & COMPANY**  
REAL ESTATE GROUP

6009-B Landerhaven Drive, Suite B  
Mayfield Heights, Ohio 44124  
P: 216.514.1400 | [www.kowitrealestate.com](http://www.kowitrealestate.com)

**Contact Agents:**

**Chuck Esreg**  
216.514.1400 x105  
[cessreg@kowitrealestate.com](mailto:cessreg@kowitrealestate.com)